



**MODERN TIMES**  
Management & Consulting (MTMC) Pte. Ltd.

[www.mtmc-sg.com](http://www.mtmc-sg.com)



**BUILDING BRIDGES  
ACROSS CONTINENTS**

# PORTFOLIO

UEN  
201543875D

Member of



Deutsch-Singapurische  
Industrie- und Handelskammer  
Singaporean-German Chamber  
of Industry and Commerce



## MISSION CRITICAL

### APM-40

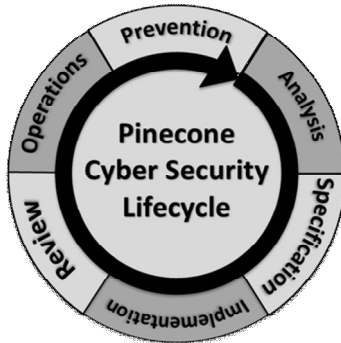
Battery/Solar Powered  
**Emergency Phone**  
with Integrated MUX and PBX



Portable & modular rapid  
deployment outdoor &  
disaster relieve phone system



<http://www.mvmtel.com>



All aspects of network technologies,  
network- and communication security, DPI  
and solution development for Government,  
Telecommunication and Corporate clients

Compumatica's high level  
security gear and solutions for  
all types of IP networks and all  
types of organizations



**PINECONE**  
**CYBER DEFENCE**

<https://pinecone-cyber.com>



**CAMTHRAX**, the world's only  
portable reagentless anthrax  
biothreat screening unit



**BluLine**, the professional  
portable fecal scanner for  
meat processing



<https://camtechdiagnostics.com>



## SMART BUILDING & HOME

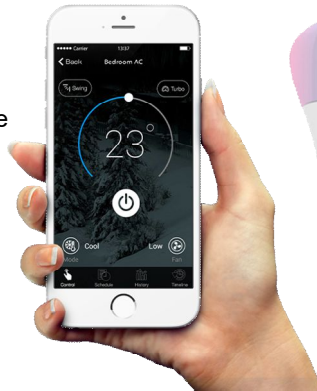


Comprehensive smart building solutions for hotels, high rise, cruise ships and any large building complex you can think of (energy & performance Class A) HVAC and Power recovery



<http://www.smartteh.si>

Embrace the smart living:  
Control your home AC, light  
and appliances from anywhere



<http://cielowigle.com>

## INFRASTRUCTURE

<http://www.hkdworld.net>

Providing specialized solutions for the practices listed with the ultimate German quality touch



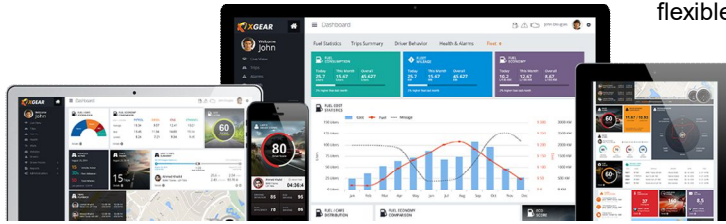


**MODERN TIMES**  
Management & Consulting (MTMC) Pte. Ltd.

www.mtmc-sg.com

PORTFOLIO

car fleet & vehicle management  
in the most professional and  
flexible manner



<http://www.xgear.io>

## SOFTWARE R & D



**YOUR ENGINEERING SOLUTIONS**

The experienced ultra low cost software house  
taking care of all your non-core R&D-needs

<http://www.yes.com.pk>

## COMMODITIES



Right from the Shea-  
Karite trees of Africa  
for your large bulk  
cosmetics needs



<http://www.arglobaltd.com>

MODERN TIMES Management & Consulting (MTMC) Pte. Ltd. is a representative / partner of the companies listed in this brochure for selected regions and countries. For further information, details, catalogues, specifications as well as pricing of these products and solutions please contact either MTMC the manufacturing company directly.

**Infoline: +65 98601175**  
**info@mtmc-sg.com**

Registered Business Address:  
16 Raffles Quay #33-03  
Hong Leong Building  
SINGAPORE 048581



Office Address:  
German Centre #05-109C  
25 International Business Park  
SINGAPORE 609916

